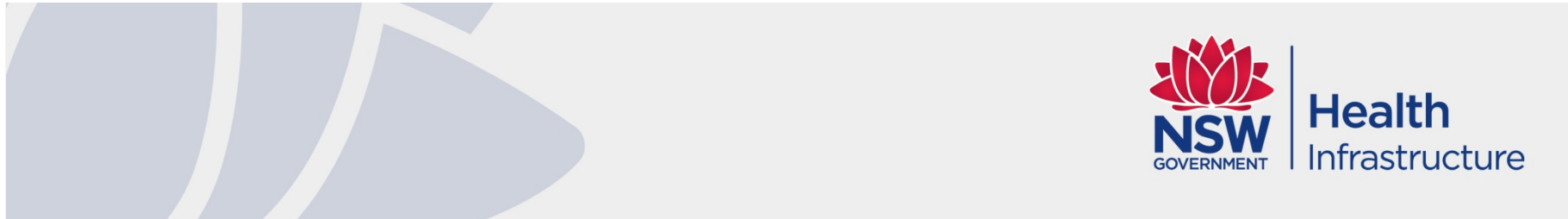


# Strategic Outcomes with BIM

03 August 2017

## Case Study : NSW Health Infrastructure



# About Health Infrastructure



Northern Beaches Hospital



The Bright Alliance



Dubbo Hospital Redevelopment Stages 1 & 2



Hillston Multipurpose Service



Health  
Infrastructure

# Strategic outcomes of BIM – HI's perspective

Collaboration

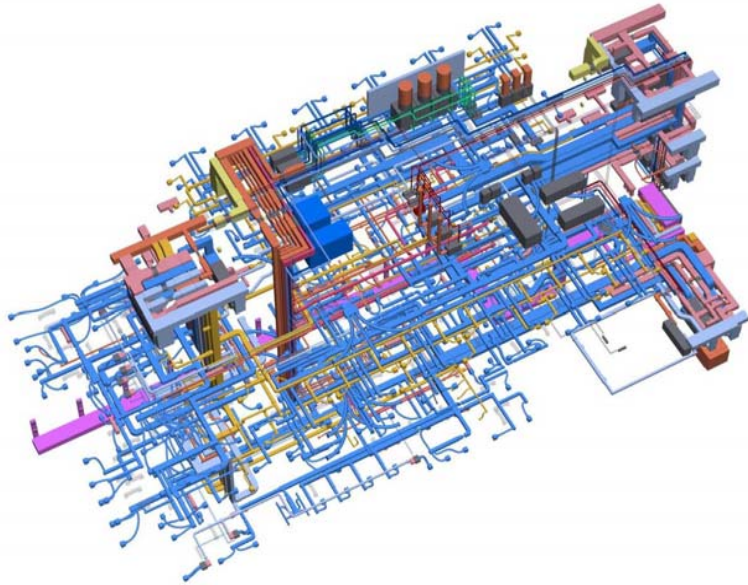
Optimisation

Efficiency



Health  
Infrastructure

## Implementation timeframe

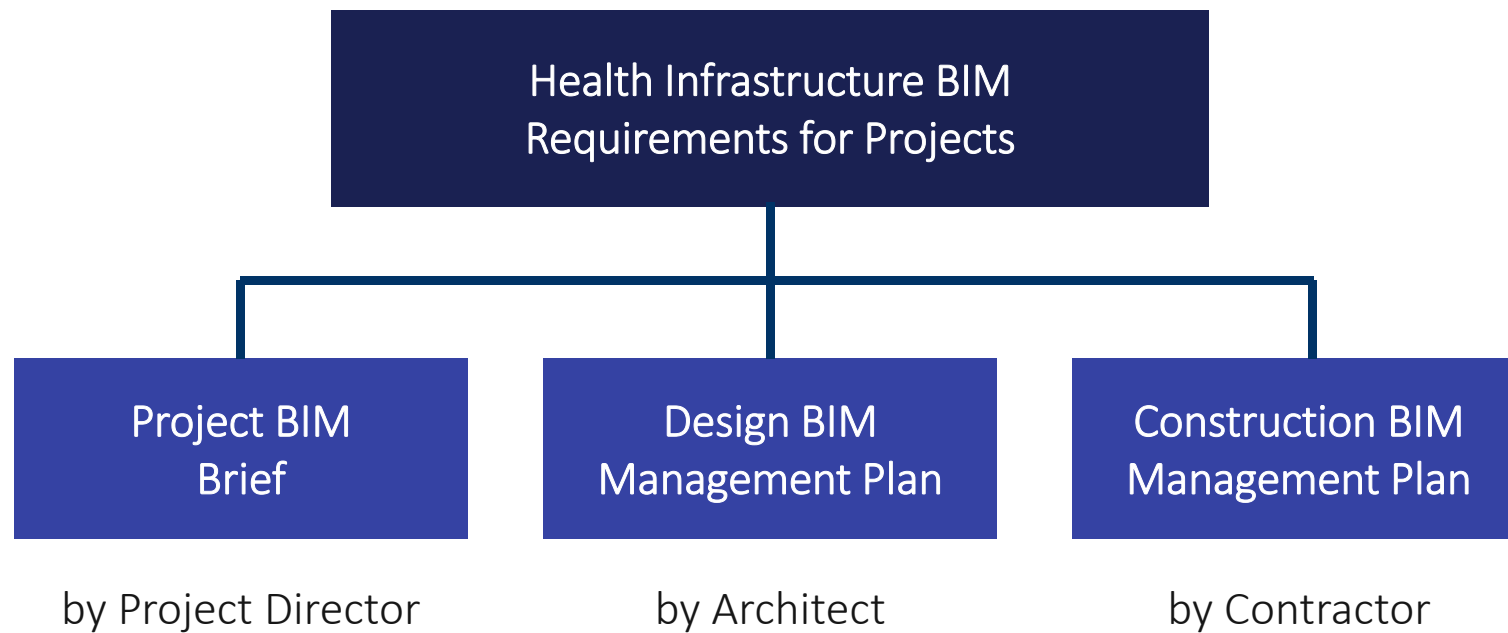


- 2013 – HI requires BIM to be used on all projects over \$30m
- 2015 – NSW Health commences AFM Online implementation
- 2016 – HI requires use of design data management tool



Health  
Infrastructure

# Governance of BIM



Health  
Infrastructure



# Benefits, challenges and where to next?

## Collaboration

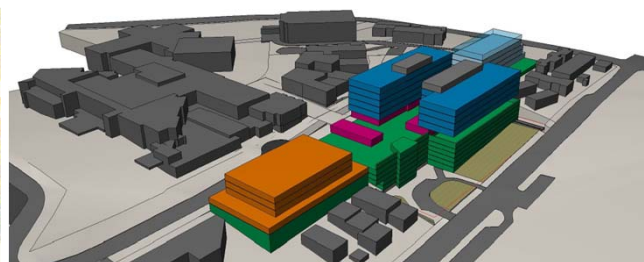


Health  
Infrastructure

# Benefits, challenges and where to next?

Collaboration

Optimisation



Health  
Infrastructure

# Benefits, challenges and where to next?

Collaboration

Optimisation

Efficiency

**ABC Hospital**  
Summary Schedule of Accommodation

Location: 1000 0000  
Revision: 1

<b>Revised TSE</b>	Revised Travel Distance	12.5%
	Revised Equipment Distance	22.5%
	<b>Total TSE Distance</b>	<b>21.5%</b>

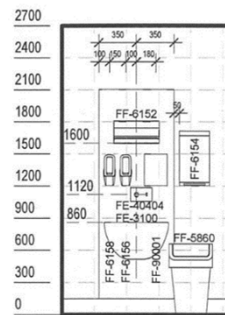
  

Room Number	Room Allocation Unit / Department name	Bedroom area
R0101	Admission Unit	100.0 sqm
R0102	Admission Unit	100.0 sqm
R0103	Admission Unit	100.0 sqm
R0104	Admission Unit	100.0 sqm
R0105	Admission Unit	100.0 sqm
R0106	Admission Unit	100.0 sqm
R0107	Admission Unit	100.0 sqm
R0108	Admission Unit	100.0 sqm
R0109	Admission Unit	100.0 sqm
R0110	Admission Unit	100.0 sqm
R0111	Admission Unit	100.0 sqm
R0112	Admission Unit	100.0 sqm
R0113	Admission Unit	100.0 sqm
R0114	Admission Unit	100.0 sqm
R0115	Admission Unit	100.0 sqm
R0116	Admission Unit	100.0 sqm
R0117	Admission Unit	100.0 sqm
R0118	Admission Unit	100.0 sqm
R0119	Admission Unit	100.0 sqm
R0120	Admission Unit	100.0 sqm
R0121	Admission Unit	100.0 sqm
R0122	Admission Unit	100.0 sqm
R0123	Admission Unit	100.0 sqm
R0124	Admission Unit	100.0 sqm
R0125	Admission Unit	100.0 sqm
R0126	Admission Unit	100.0 sqm
R0127	Admission Unit	100.0 sqm
R0128	Admission Unit	100.0 sqm
R0129	Admission Unit	100.0 sqm
R0130	Admission Unit	100.0 sqm
R0131	Admission Unit	100.0 sqm
R0132	Admission Unit	100.0 sqm
R0133	Admission Unit	100.0 sqm
R0134	Admission Unit	100.0 sqm
R0135	Admission Unit	100.0 sqm
R0136	Admission Unit	100.0 sqm
R0137	Admission Unit	100.0 sqm
R0138	Admission Unit	100.0 sqm
R0139	Admission Unit	100.0 sqm
R0140	Admission Unit	100.0 sqm
R0141	Admission Unit	100.0 sqm
R0142	Admission Unit	100.0 sqm
R0143	Admission Unit	100.0 sqm
R0144	Admission Unit	100.0 sqm
R0145	Admission Unit	100.0 sqm
R0146	Admission Unit	100.0 sqm
R0147	Admission Unit	100.0 sqm
R0148	Admission Unit	100.0 sqm
R0149	Admission Unit	100.0 sqm
R0150	Admission Unit	100.0 sqm
R0151	Admission Unit	100.0 sqm
R0152	Admission Unit	100.0 sqm
R0153	Admission Unit	100.0 sqm
R0154	Admission Unit	100.0 sqm
R0155	Admission Unit	100.0 sqm
R0156	Admission Unit	100.0 sqm
R0157	Admission Unit	100.0 sqm
R0158	Admission Unit	100.0 sqm
R0159	Admission Unit	100.0 sqm
R0160	Admission Unit	100.0 sqm
R0161	Admission Unit	100.0 sqm
R0162	Admission Unit	100.0 sqm
R0163	Admission Unit	100.0 sqm
R0164	Admission Unit	100.0 sqm
R0165	Admission Unit	100.0 sqm
R0166	Admission Unit	100.0 sqm
R0167	Admission Unit	100.0 sqm
R0168	Admission Unit	100.0 sqm
R0169	Admission Unit	100.0 sqm
R0170	Admission Unit	100.0 sqm
R0171	Admission Unit	100.0 sqm
R0172	Admission Unit	100.0 sqm
R0173	Admission Unit	100.0 sqm
R0174	Admission Unit	100.0 sqm
R0175	Admission Unit	100.0 sqm
R0176	Admission Unit	100.0 sqm
R0177	Admission Unit	100.0 sqm
R0178	Admission Unit	100.0 sqm
R0179	Admission Unit	100.0 sqm
R0180	Admission Unit	100.0 sqm
R0181	Admission Unit	100.0 sqm
R0182	Admission Unit	100.0 sqm
R0183	Admission Unit	100.0 sqm
R0184	Admission Unit	100.0 sqm
R0185	Admission Unit	100.0 sqm
R0186	Admission Unit	100.0 sqm
R0187	Admission Unit	100.0 sqm
R0188	Admission Unit	100.0 sqm
R0189	Admission Unit	100.0 sqm
R0190	Admission Unit	100.0 sqm
R0191	Admission Unit	100.0 sqm
R0192	Admission Unit	100.0 sqm
R0193	Admission Unit	100.0 sqm
R0194	Admission Unit	100.0 sqm
R0195	Admission Unit	100.0 sqm
R0196	Admission Unit	100.0 sqm
R0197	Admission Unit	100.0 sqm
R0198	Admission Unit	100.0 sqm
R0199	Admission Unit	100.0 sqm
R0200	Admission Unit	100.0 sqm



briefing  
information

design  
visualisation &  
endorsement



design  
documentation



item and system  
selection and  
costing



post-  
construction  
validation



asset and as-  
built  
information



**Health  
Infrastructure**



# Thank you



Follow us on LinkedIn @Health\_Infrastructure



Follow us on Twitter @NSWHealthInfra



Watch our videos on YouTube @Health\_Infrastructure



Email us [hi-info@health.nsw.gov.au](mailto:hi-info@health.nsw.gov.au)



Health  
Infrastructure